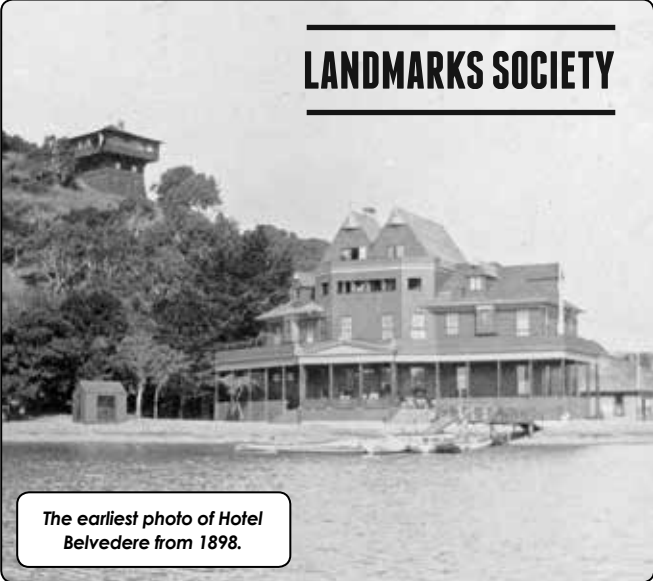


Promotional postcard from about 1905.



LANDMARKS SOCIETY

The earliest photo of Hotel Belvedere from 1898.

HOTEL BELVEDERE

By Dave Gotz

In December 1897 the Marin County Tocsin reported: "Mrs. Annie T. Moore, who for a number of years has been in the management of the Oliver in San Francisco and the Mount View Hotel in Ross Valley, has purchased from the Belvedere Land Company the old hotel site on the beach at Belvedere, and we are informed will at once erect a 25-room hotel building thereon. The reputation which Mrs. Moore has earned in this county is sufficient guarantee that the 'Hotel Belvedere' will be another star in the constellation of first-class hostelrys which make a perpetual joy to the sojourner in beautiful Marin."

This elegant and imposing building, the largest on the peninsula, was open for business in May 1898, and expanded in 1900 to have over 50 rooms as well as renting out rooms in the adjacent building owned by the Land Company now called the Farr Cottages. Initially the hotel was only open in spring and summer, but by 1905 it boasted that it was the only summer and winter resort hotel on the bay. Using the "Beautiful Belvedere" slogan and claiming "NO FOG-NO COLD WINDS", a brochure from the time heralded "fine boating, canoeing, fishing and bathing, dancing, billiards, tennis, automobiling and hill climbing". The rooms had all the modern conveniences and rented for \$3.00 per day, while the 12 seat dining room featured "cuisine that was first-class in every particular".

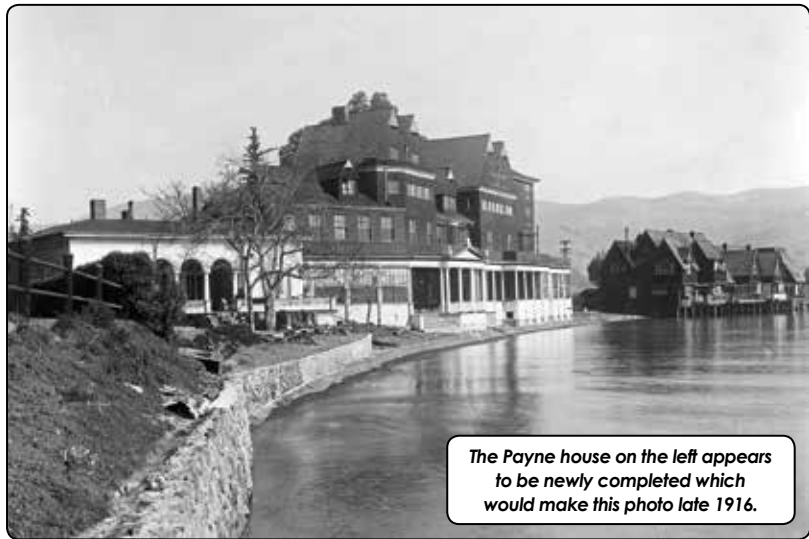
The hotel continued to do a thriving business through 1906 aided in part by helping earthquake and fire victims find lodging, but by the end of 1907 "heartbroken over the financial straits she finds herself in", Mrs. Moore filed for bankruptcy. The hotel continued to operate with a succession of managers, under the ownership of the Continental Building and Loan Association. The extended family of William Corbin, the general manager of Continental, were the last residents of the hotel in the early 1920's.

The once grand building suffered a minor fire and by 1925 was in complete disrepair. The San Francisco Yacht Club bought the building. Deciding that it was unsuitable for their purposes it was demolished in 1926. It was eight more years before SFYC built their club house on the lot.

Seen in some of the later photos of the Hotel is the Italianate home of Dr. Clyde S. Payne built in 1916 on the adjacent lot. This house eventually became part of SFYC and is called the Cove House. By the time you are reading this article that house will have unfortunately been demolished as part of the Club's expansion plans. Please help the Landmarks Society to preserve our local history and keep it accessible to the community; visit our website at www.landmarksociety.com.



Hotel Belvedere circa 1902, after the large addition and the construction of the "Farr Cottages".



The Payne house on the left appears to be newly completed which would make this photo late 1916.