

# LANDMARKS

*Living History ~ The Tradition Begins With You*

Spring 2026



Tiburon waterfront, circa 1891.  
St. Hilary's Mission Church had  
been recently built in 1888.

**When Main Street Was Water Street  
Smitty: A Railroad Man Remembered  
Old St. Hilary's Concerts**

**The Navy That Never Came  
How the Belvedere Land Company Shaped a City  
Become a Landmarks Member**

# President's Corner

As I reflect on my first few months serving as the Board President of the Belvedere-Tiburon Landmarks Society, I'm excited by all the new and evolving relationships that come with this role.



When I first moved to Tiburon a decade ago and soon joined Landmarks as a docent at the Railroad & Ferry Depot Museum, I was struck by the knowledge, energy, and thoughtful leadership skills demonstrated by that facility's lead docent and Board President Phil Cassou. Over the subsequent years, my admiration for Phil has only deepened, and I'm proud to say I consider him a personal mentor. I'm so pleased that he continues to provide leadership in his new role as Board Vice President.

Having served on the Landmarks Board for the last year, I've been very impressed by the specialized knowledge, interest and engagement each of the Board members has brought to our discussions of the matters facing the organization. As you can imagine, the maintenance and operation of four historic landmark properties — each of which is well over a century old — entails sorting through competing priorities and resolving a wide variety of issues. This Board has collaboratively worked through the options to provide guidance that has helped create a high-functioning and well-regarded nonprofit public benefit organization.

Perhaps the most exciting opportunity provided by my new role is the chance to work closely with Landmark's small but truly amazing staff. Under the creative and supportive leadership of Executive Director Patty Flax, this very small group of part-time employees is able to make significant progress on the various challenges and opportunities that arise each week. Patty and her dedicated, enthusiastic team (Jennifer Hartung, Maren Jaffe and Paige Petrini) have ensured smooth sailing for our members and visitors during each event and each visit to our facilities.

Speaking of our facilities, our four historic landmarks and our Archives require almost

continuous evaluation, planning and funding to ensure they continue to be steadily more attractive, informative, and safe. Over the last year, we've been particularly focused on evaluating and limiting the potential impacts of our events on our neighbors. Discussions with some of our closest neighbors and Town representatives have given us new perspectives and ideas we're eager to implement. These relationships remain exceedingly important to us.

Over the coming year, I look forward to working with our Board and staff to further strengthen collaborative relationships between the Landmarks Society and other local public-benefit organizations, including the Belvedere Tiburon Library, The Ranch joint recreation committee, Tiburon's Heritage & Arts Commission, the Belvedere Community Foundation and others.

Finally, probably the most important relationships I want to support are with the many members of the Landmarks Society. A friend once told me that "90% of a relationship is just showing up and listening," and as your Board President, that is certainly something I'm dedicated to doing! I hope that if you have ideas or feedback for Landmarks, that you'll share your input with me, our Board and our staff by contacting our office at (415) 435-1853. Please use that same number if you'd like to explore becoming a docent or can otherwise volunteer.

Above all, please take advantage of all that the Landmarks Society has to offer! If you haven't yet visited each of our five facilities — or perhaps it's been quite a while since you have — please make a point to come by on days when docents are present April through October. Also, please enjoy plein air art at the Art & Garden Center, consider joining a wildflower

walk or taking in a concert at Old St. Hilary's. And be sure to attend our May 14th Members' Spring Social at the Art & Garden Center; I look forward to seeing you there!

*Mark Freiberg*

# Director's Message



Reading the President's Corner, I'm reminded how fortunate the Belvedere-Tiburon Landmarks Society is to have such thoughtful and engaged leadership at the board level. The spirit of collaboration, curiosity, and

care described there is something I see firsthand every day and it's what truly makes this organization so special.

This year marks my tenth year with Landmarks. I began on the events side before stepping into the role of Executive Director in 2018 (seems like yesterday), and throughout that time I've had the privilege of working alongside dedicated board members, passionate volunteers, and a small and remarkably capable part-time staff. Together, we've navigated challenges and embraced opportunities, always guided by a shared commitment to preserving and celebrating the history of our community.

What continues to inspire me is the care with which our dedicated board approaches each decision, and the way our staff continually rises to meet the evolving needs of our sites, our neighbors, and our

## Landmarks Society

### 2026 Board Officers

Mark Freiberg, *Board President*  
Phil Cassou, *Board Vice President*  
Jim Allen, *Co-Treasurer*  
Brooke Halsey, *Co-Treasurer*  
Helen Lindqvist, *Secretary*

### Board Members

Peter Brooks   Eva Buxton  
Bob Harrison   Melissa Feder  
Suzanne White

## Staff

Patty Flax,  
*Executive Director*  
Jennifer Hartung,  
*Archivist*  
Maren Jaffe  
*Administrative Assistant*  
Paige Petrini,  
*Events Liaison*

## Editors/Writers:

Jim Allen, Phil Cassou,  
Patty Flax, Jennifer Hartung



## Design:

Mark Shepard,  
shepgraphics.com

Except where noted, all photos  
from the Landmarks Archives

### Director's Message, *continued*

visitors. It is truly a team effort. There's a sense of joy in the work we do together and we often joke that working at Landmarks feels a bit like living in a Hallmark movie.

Looking ahead, I'm excited to deepen our connections with our members, local organizations, and the broader community. These relationships are at the heart of everything we do, and they ensure that our historic sites remain vibrant, relevant, and welcoming for generations to come.

Thank you for being part of this work, and for your continued support of Landmarks.

*Patty Flax*

## Coming Up at Landmarks

**Wildflower Walks at Old St. Hilary's Preserve** – Experience the beauty of nature on guided Wildflower Walks with expert naturalists Alison Pence and Judy Armstrong every Friday and Saturday beginning at 10 a.m. with tours offered until 12 p.m., Explore the vibrant blooms and hidden gems of Old St. Hilary's Preserve. Meet at historic Old St. Hilary's Chapel, located at 201 Esperanza. Be sure to wear sturdy hiking shoes and bring layers for comfort as you stroll through this stunning natural landscape (walking sticks recommended). Limited parking is available, so we encourage carpooling or walking up to the chapel for a more eco-friendly experience. Don't miss out on this peaceful and educational adventure!

**Plein Air Painting at Landmarks Art & Garden Center** – On the fourth Thursday of every month, from 10 a.m. to 2 p.m., immerse yourself in the stunning outdoors and let your creativity flow with our Plein Air Painting group! Whether you're a seasoned artist or just starting out, these sessions offer a relaxed and inspiring setting to paint amidst the natural beauty of the Art & Garden Center.

Under the guidance of Jennifer Fearon and Carol Weiss, you'll learn new techniques and discover tips for capturing the essence of nature. It's more than just painting, it's about embracing the fresh air, finding inspiration in the landscape, and expressing your artistic spirit. Pastels and watercolors are provided or bring your own supplies. Come join us for a peaceful, creative escape in nature! RSVP: [office@landmarkssociety.com](mailto:office@landmarkssociety.com).

### **The Railroad that Started Tiburon - First Wednesday Talk at the Mill Valley Library**

**Date:** Wednesday May 6th, 2026

**Time:** 6:30 - 8:00 p.m

Did you know Tiburon's transformation into a bustling transportation hub began with the railroad? Originally named Punta de Tiburon by Spanish explorers in 1775, the area evolved a century later into a vital rail and ferry terminus connecting Northern California to San Francisco and beyond.

Join local historians Phil Cassou and Phil Maslin as they bring this story to life through vivid photographs and firsthand accounts of a not-so-distant past. From Peter Donahue's expansion of the railroad in 1884 to the final train's departure in

## Members' Spring Social

Thursday, the 14th of May, 2026, 4:30 to 7:00 PM  
Landmarks Art & Garden Center—841 Tiburon Boulevard



Please join us for an afternoon of delightful conversation, seasonal refreshments, and the joy of camaraderie in the beautiful surroundings of the Art & Garden Center. This gathering will be a celebration of the season's bloom, and we would be honored to have your presence as we come together to celebrate another year of fellowship. RSVP: [office@landmarkssociety.com](mailto:office@landmarkssociety.com) or 415-435-1853

1967, you'll discover how a quiet peninsula became a center of railroad and maritime activity and gain a deeper appreciation for the history that shaped our community. Register here: [millvalleylibrary.libcal.com](http://millvalleylibrary.libcal.com)

**The Ranch Art & Garden Camp** – Give your child or grandchild a memorable summer experience at the Art & Garden Center, where children ages 4 to 7 can explore the wonders of nature through engaging educational lessons and hands-on arts & crafts projects. Running from June 15 to August 14, this camp offers a perfect blend of creativity and outdoor exploration. Watch your little ones connect with nature, discover new skills, and unleash their imagination in a fun and nurturing environment. For more details, visit: [www.theranchtoday.org](http://www.theranchtoday.org).

**Float Your Boat History Tour** – Set sail for an unforgettable voyage through history! Join us aboard the ferryboat Tamalpais for a captivating Landmarks Society history tour from the water.

**Date:** Friday, September 25, 2026

**Time:** 5:30 p.m. - 7:30 p.m.

We invite you to embark on a 2-hour historical journey around the scenic shorelines of Tiburon and Belvedere. Tickets will go on sale the first week in September. This tour sold out in two days last year so be sure to purchase early.

# When Main Street Tiburon was “Water Street” 1882-1906

By Jennifer Hartung

In 1882, James Donahue brought his San Francisco and North Pacific Railroad to Point Tiburon, establishing a vital transportation link between Northern California and San Francisco. Soon, buildings sprang up on the narrow spit of land connecting Point Tiburon and what is now Corinthian Island. With water on both sides of the strip, the new thoroughfare was aptly named Water Street, as shown on the 1891 Sanborn-Perris map.

The railroad quickly gave rise to a small but lively community. By 1884, when the first train steamed into town, Tiburon already had the makings of a real settlement. A post office opened in May of that year, and residents gathered at Savage’s Hotel that November to cast ballots in the presidential election. Of the 44 residents who voted, 33 cast their ballots for Grover Cleveland.

Most of the earliest buildings faced the bay, turning their backs to the lagoon. These included the Tiburon Hotel & Saloon and several boarding houses built to

house workers constructing the railroad and ferry slips. As the town grew, additional businesses followed—grocery stores, stables, and an abundance of saloons. Tiburon’s waterfront location quickly became central to its identity and economy. One of the earliest waterfront enterprises was the Pioneer Boat House on the Bay side of the street. A *Sausalito News* article from 1886 described the thriving business: “Charley Rudolph of the Pioneer Boat House is as fat and happy as ever and is kept busy

supplying boats to the many anglers and pleasure seekers who throng our town on Saturdays and Sundays.”

The following year brought a dramatic addition to Tiburon’s growing streetscape. On September 24, 1887, the *Napa Register* announced “Sail of a Hotel!: All the buildings of the San Francisco and North Pacific Coast Railroad at Donahue (in Petaluma) are being moved to Point Tiburon. The large hotel, erect, as it stood on land, went down the Petaluma creek this morning on a barge towed by a tug.” The 40-room Sonoma House hotel and four boarding houses are easily identifiable in photos of the period. The Sonoma House stood at the present-day junction of Main Street and Tiburon Boulevard, while the boarding houses lined up behind it to the north.

By 1890, Water Street had developed into a busy stretch of businesses serving both residents and

One of the earliest images of Tiburon in about 1886. Tiburon Hotel & Saloon is in the center. The large building to the right is one of the boathouses along the shore, at one point known as Tiburon Boat House. (California State Library).



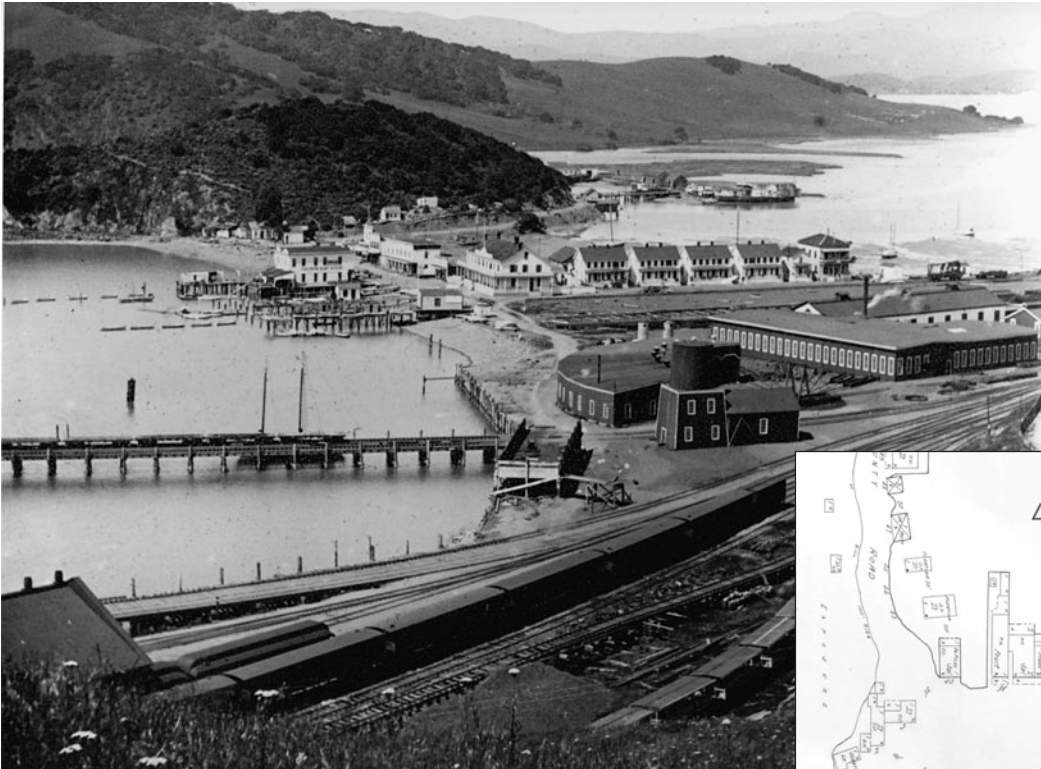


Left: Tiburon waterfront circa 1891. Based on the structures shown in this photograph, we believe the photo was taken soon after the fire of November 1890. The Sonoma House hotel is in the foreground with two of the boarding houses to its right. Across the street from the hotel are the Pioneer Boat house and the larger Tiburon Boat House. The original Corinthian Yacht Club clubhouse sits on the tip of what we now call Corinthian Island.

travelers. But tragedy struck in November when a fire, believed to have started from a defective flue in the Tiburon Hotel, swept through the town. Much of Water Street was destroyed. Among the losses were the Tiburon Hotel, O'Brien's grocery and saloon, the post office (then located inside the barber shop), Ozane's fruit and vegetable store, Cookson's restaurant, and several dwellings and boarding houses. The Sonoma House hotel and the boathouses across the street were fortunate to survive the blaze.

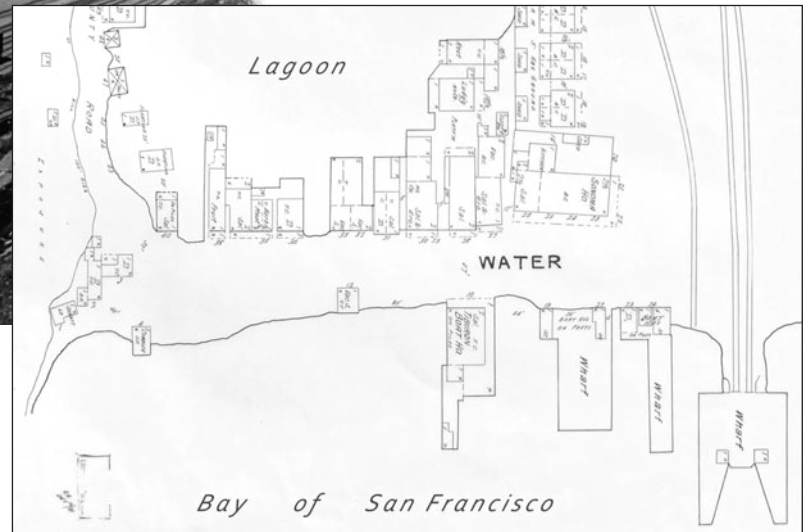
Despite the devastation, Tiburon rebuilt quickly. A new Sanborn-Perris map produced in November 1891, just one year after the fire, shows a thriving commercial district once again. The rebuilt street included eight saloons, two grocery stores, a meat market, a fruit store, a barber, and a cobbler. The town's enthusiasm for rebuilding was matched by its enthusiasm for drink: as the *Sausalito News* humorously observed only a month after the fire, "Every building in town erected since the fire has a saloon in it or a saloon connected with it."

The urgency to rebuild and improve the way the buildings looked was partly driven by a new development on the peninsula. Shortly before the



This photograph shows both the Tiburon Hotel & Saloon and the Sonoma House hotel, helping us date the photo to before the November 1890 fire. The railroad roundhouse and railyard are in the foreground, with the lagoon and the northern tip of Belvedere in the distance.

A portion of a Sanborn-Perris map showing Tiburon in November 1891. Sanborn maps were highly detailed maps created to help insurance companies assess the risk of fire. Notice that Main Street Tiburon is shown as Water Street.





Above: We believe this photograph of Main Street Tiburon was taken in the early 1900s, based on the electrical wires strung across the street. The photographer is perched on the balcony of the Sonoma House hotel. From the flag carried near the head of the procession, we suspect the group is either going to the opening of the drawbridge or an event at Corinthian Yacht Club.

Right: O'Briens Saloon and Grocery circa 1895. Notice the sign to the right for Bellevue House, one of many lodging establishments in Tiburon.



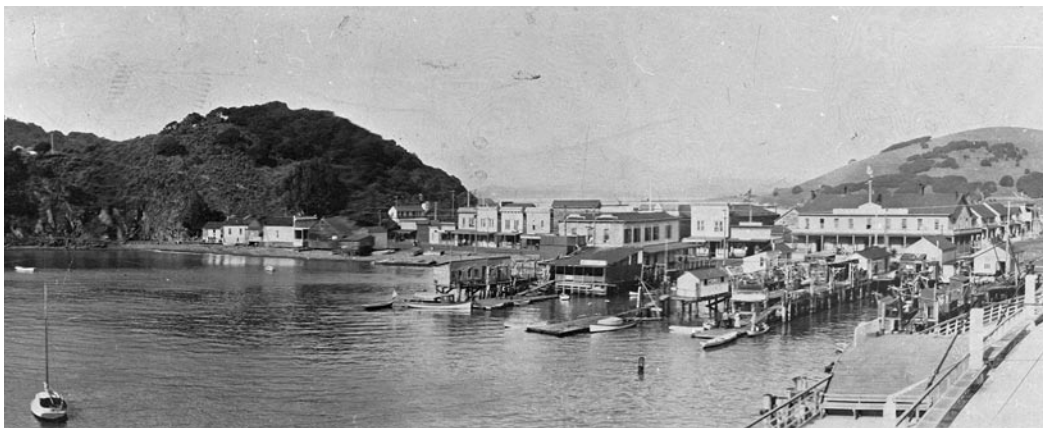
1890 fire, The Belvedere Land Company began selling lots on the island of Belvedere, attracting wealthy visitors from San Francisco who made their way to their new homes via Tiburon's short street.

Throughout the 1890s and into the early twentieth century, Tiburon benefited from the railroad's role as a gateway to Northern California. Travelers passed through the town regularly, and many local businesses offered rooms for short or long-term rent. When the federal census was taken in June 1900, Tiburon counted 148 guests staying in hotels and boarding houses, fully one quarter of the town's population.

The businesses along Water Street reflected the diverse backgrounds of their owners. Advertisements from the period mention Bernstein's shaving parlor, Policheck's restaurant, Tsukamoto's laundry, Sullivan's saloon, and Hansen's liquor store, an international mix that illustrates the multicultural character of the young town.

Alas, Tiburon's Main Street would experience two more devastating fires before the buildings we know today were constructed. In August 1906, sparks from the chimney of R. Paul's bakery ignited a neighboring roof and once again flames swept through the business district. This time the destruction was nearly total. The Sonoma House, by then renamed the Hotel Tiburon, was lost, as was the large white boathouse known as Tiburon Boat House. The boathouse was soon rebuilt on the same site, however, and still stands today at 15 Main Street as the oldest surviving building on the street. Fifteen years later, in April 1921, fire struck again. Official reports attributed the blaze to an overheated stove or an electrical malfunction. Local rumor, however, told a more colorful story: that a bootlegging still in the back room of Sullivan's pool hall sparked the conflagration that once again reduced much of the town to ashes.

Today's Main Street bears little physical resemblance to the bustling wooden streetscape of the nineteenth century, but its history remains embedded in the town's character. The surviving boathouse at 15 Main street and the stories preserved in old maps, photographs, and newspapers remind us that Tiburon's waterfront was shaped not only by railroads and commerce, but by the determination of the people who rebuilt their town again and again.



Top: Tiburon waterfront viewed from one of the piers circa 1900.

Middle: Tiburon Main Street circa 1895. The distinctive Sonoma House hotel sits at the current-day junction of Main Street and Tiburon Blvd. With close inspection of the photograph, we can identify O'Briens grocery and saloon with its triangular sign on the wooden awning. A horse and carriage are just in front of the saloon. (California State Library).

Bottom: Tiburon Main Street circa 1910. This version of Main Street followed the more stately version that burned in the 1906 fire. These structures would be destroyed by the third and final Main Street fire of April 1921.



# A Legacy of Giving: HOW THE BELVEDERE LAND COMPANY SHAPED A CITY

By Jim Allen

**B**elvedere is, without a doubt, beautiful. Long before it became what it is today, there was a Native American village near the convergence of what are now San Rafael Avenue, Tiburon Boulevard, and the creek running off the hill. It was a rich and abundant place to live.

My grandparents, Harry and Winnie Allen, loved Belvedere. Winnie grew up in one of the first ten homes built here, at 296 Beach Road. Harry first came as a weekend guest before the 1906 earthquake. When they purchased all the stock in the Land Company in 1935, their intention was to preserve and restore as much of Belvedere's natural beauty as possible. The Belvedere Land Company, also known as the BLC or simply the Land Company, has gone by several interchangeable names over the years.

The Land Company made significant contributions of land intended to preserve Belvedere's natural beauty. The guiding concept was that "sharing the bounty increases the value and benefits for everyone." Even before Belvedere

became a city in 1896, the original Land Company owners pledged to give the future town the entire beach extending from today's SFYC to the southern tip of "the Island," provided it remained open in perpetuity for public use. That condition, "no private use", remains an essential part of the deed. Today, anyone can access the beach via a stairway from Upper Beach Road.

The lanes and stairways on the Island connect the upper and lower streets. They were originally given as part of the Land Company's plan in 1890. At a time when most people walked from place to place, these lanes were valuable shortcuts. Today, they are lovingly maintained by volunteers.

Imagine Belvedere without its parks, without the open space along the seawall at 40-58 Beach Road, or without the public beach between SFYC and the southern tip of the Island. Imagine thousands of homes covering a filled-in Richardson Bay.

In 1937, Harry and Winnie Allen undertook their first major project: restoring the Belvedere Lagoon

Belvedere Land Company was recognized by the California Historical Society as a historic business at the time of its centennial in 1990.



Above: David (left) and Howard (right) Allen circa 1990. After Harry Allen's passing in 1966 the Land Company became a partnership of his three children, with Dave and Howie acting as the managers and brokers.

Left: The Belvedere Land Company building in the mid-1930s, around the time Harry and Winnie Allen purchased the company. The building was built in 1899 and designed by architect Albert Farr. It served as Belvedere's commercial hub with businesses on the first floor and residential flats above.



Winnie and Howie Allen at the re-dedication of Harry B. Allen Park on July 4, 1976. This photograph captures four generations of the Allen family with Peter Allen behind Winnie in the striped shirt holding his niece, Tahara Allen. (Ark Photo)

to something closer to its natural state. In the 1920s, the railroad had attempted to use bay mud as a road base along its tracks, but the mud slid into and filled the lagoon. Over the next twenty-five years, Harry and Winnie invested their time and resources to restore and redevelop it. When the surrounding land was nearly fully occupied, they donated the lagoon itself to the Belvedere Lagoon Property Owners Association.

In the early 1950s, a large portion of Richardson Bay was at risk of being filled for a major housing development. Plans to level the Tiburon hills and fill the bay would have dramatically changed both Tiburon and Belvedere forever. At the time, private ownership of “tide lots” was a legacy of early California financial policies, when the state sold land lying under less than nine feet of Bay water. Much of that land had already been filled since the Gold Rush. The Reed family descendants, the Land Company, and individuals such as Howie Allen all owned tide lots.

Public reaction to the proposed Reeds Port



Belvedere Land Company sold the China Cabin to the Landmarks Society in 1973. This photo shows the Cabin just before it was moved to its new pier for restoration. The arrangement provided that the space along the sea wall at 40-58 Beach Road would remain open in perpetuity for public enjoyment.

development was strongly negative, and the project was ultimately stopped. The Land Company and Howie Allen donated their tide lots, while fundraising efforts made it possible to purchase or lease others. Without access to dry land, the Reeds Port concept effectively collapsed.

The park between Community Road and San Rafael Avenue, now Harry B. Allen Park, was donated in 1958 by Harry and Winifred Allen, the second owners of the Land Company. Today, it is constantly in use for concerts, games, dog walking, and family gatherings.

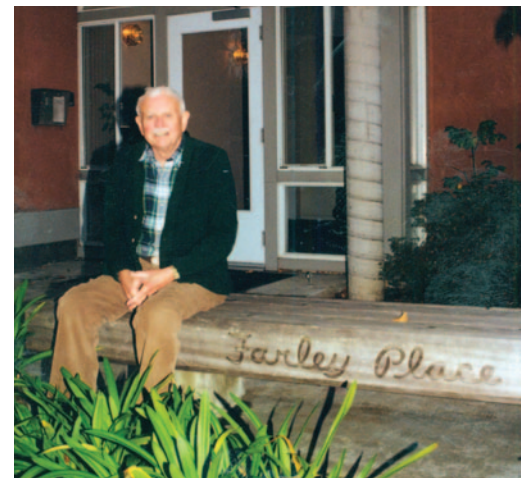
In 1980, the Land Company donated the open space between 40 and 58 Beach Road as part of an agreement with the City of Belvedere and the Landmarks Society. The China Cabin was also donated and preserved as part of that agreement. Keeping this area open remains a tremendous asset for everyone who passes by.

Mayor Erwin Farley, a housing advocate in his professional life, helped ensure that some affordable housing would remain in Belvedere. He spearheaded the development of the city’s only affordable housing, made possible through public support and donations inspired by my father and my uncle, Dave and Howie Allen, then owners of the Land Company. The building fits unobtrusively into its surroundings and provides a safe, convenient, and beautiful setting for

eleven senior homes.

The small circular park between SFYC and 83 Beach Road was also donated by the Land Company. It is used daily for dogs, sports, and children waiting for school buses and carpools.

I’m proud to say that my ancestors, along with many others, made lasting contributions to keeping Belvedere beautiful. It remains one of the most desirable places in the world to live.



Belvedere resident Erwin Farley in 1999 outside the housing complex he helped develop at 515 San Rafael Avenue. The Belvedere Land Company donated half of the land plus architect Warren Callister’s time to the project. (Diane Smith Collection)

# Howard Lazar Gifts Bust of “Smitty” to Railroad & Ferry Depot Museum

The Railroad & Ferry Depot Museum recently received a very special addition to its collection: a life-sized bust of “Smitty,” a beloved local railroad worker, gifted by acclaimed sculptor Howard Lazar.

Smitty was a fixture of the Tiburon waterfront in the 1950s and '60s. For Lazar, he was a larger-than-life presence during his teenage summers working at Viola and Leslie Bekes' coffee shop across from the railroad yard. In his own words:

“One of these patrons was an enormous railroad machinist in his fifties, called Smitty, who was always wearing overalls and a soiled engineer’s cap. Before he would give me his order, Smitty always greeted me by name, his eyes twinkling, as if I were one of his favorite cousins ... Somebody must have told him that I worked two shifts ... because he always left me a dollar tip, regardless of what I had served him.”

Lazar’s bust captures Smitty’s kind, twinkling eyes and barrel-chested laugh—an enduring memory of a man who embodied the heart of the railroad community. “Decades later,” Lazar writes, “I still occasionally think of him, hear his deep-chested laugh, and easily picture a mighty steel diesel watching over everyone and everything else in the yard.”

The donation to the Railroad & Ferry Depot Museum ensures that Smitty’s spirit and legacy remain part of Tiburon’s shared history. Visitors can

now encounter the bust alongside artifacts and photographs from the era, experiencing both the physical presence of Smitty and the personal history he represents.

Howard Lazar, whose work is featured in institutions such as the American Jazz Museum and the San Francisco Cable Car Museum, first presented “Smitty” in his exhibition *Notable People I Grew Up*

*Knowing* at the Belvedere-Tiburon Landmarks Society’s China Cabin last fall. The exhibition featured eight busts of people who shaped his youth growing up in Tiburon, each accompanied by his personal reflections. Smitty’s story, now immortalized, stands as a testament to the people who made the Tiburon Peninsula such a vibrant and memorable community.



Howard Lazar speaks to an enchanted full house at the China Cabin during his *Notable People I Grew Up Knowing* exhibition last October.



## Plein Air Session at the Art & Garden Center

March’s plein air session was a joy - beautiful light, great company, and so many inspiring interpretations of the landscape. This photo captures just a glimpse of the creativity and focus everyone brought to the day.

We’re excited to keep it going all year long! Join us on the fourth Thursday of each month for more outdoor painting sessions.

Please note: this month is a special exception - the session will be held on **Thursday, April 30th**.

All levels are welcome, so grab your supplies and come paint with us!

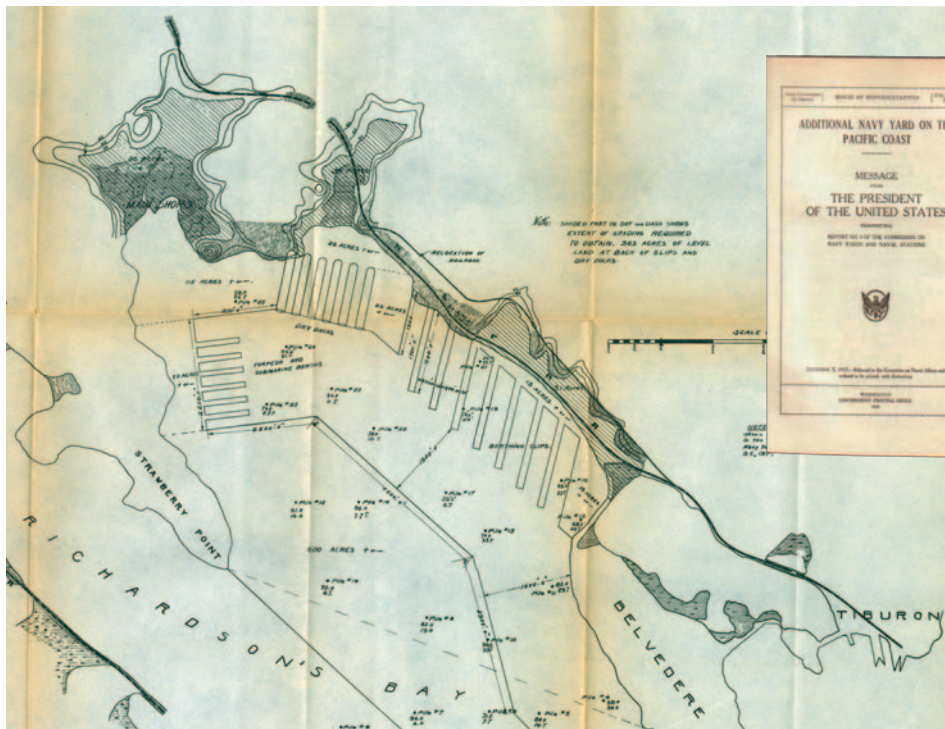
## Thank You to Our Railroad Docents

We would like to extend our sincere thanks to the dedicated docents who supported the recent Bel Aire School third grade tours. Their time, knowledge, and enthusiasm helped bring local history to life for our students in a truly meaningful way.

At the Railroad and Ferry Depot Museum, **Steve Callender, Phil Cassou, Mark Freiberg, Sally Pasternack, Becky Pringle, and Sharon Terrill** shared engaging presentations covering four fascinating aspects of our community’s past. Students learned about Railroad History with Mark, explored what a railroad office looked like 100 years ago with Steve and Sharon, discovered railroad bells, uniforms, clocks, and Tiburon landmarks with Becky, and heard about the bucket brigade once used to fight fires in Tiburon with Sally, while Phil kept everybody on schedule.

We are deeply grateful for their contributions and for helping make this educational experience so memorable.





## 1918 Map of Proposed Naval Yard in Richardson Bay

In March, the Landmarks Society Archives received a fascinating donation that sheds light on a little-known chapter of local history. The item is a 1918 map depicting a proposed naval yard in Richardson Bay, an ambitious plan that, if realized, would have dramatically reshaped the Tiburon waterfront. The map is extensively detailed, outlining berthing slips, dry docks, and facilities for torpedoes and submarines. It also indicates grading work and even the planned relocation of the railroad line.

The map was generously donated by local resident, who discovered it online. Notations identify the map as Appendix C-4 from House Document No. 1946, 64th Congress, 2nd Session. According to the title page that accompanied the map, the full report, "Additional Navy Yard on the Pacific Coast" was presented to the House of Representatives in 1917.

While no additional information about this map has yet surfaced in the Archives, the discovery opens an intriguing avenue for future investigation and prompts us to imagine how different Tiburon might look today had the naval yard been built.

# Join the Belvedere-Tiburon Landmarks Society

Please join us as a member of the Landmarks Society. Your membership directly supports the preservation of our historic sites and archives and helps to make Tiburon and Belvedere's history a meaningful part of everyday life in our community. You can join Landmarks by making a tax-deductible gift today at [www.landmarkssociety.com](http://www.landmarkssociety.com)



A Pictorial History of Belvedere 1890-1990

### **BENEFACTOR** **\$5,000**

**Special Benefits:** A private event at Old St. Hilary's, China Cabin, or the Art & Garden Center for three hours. A historic photograph of your choosing from the archives. Four tickets to a future concert of your choice at Old St. Hilary's.

### **GUARDIAN** **\$2,500**

**Special Benefits:** A private event at Old St. Hilary's, China Cabin, or the Art & Garden Center for three hours (Monday – Thursday). Two tickets to the concert of your choice at Old St. Hilary's.

### **STEWARD** **\$1,000**

**Special Benefits:** Two books of your choice on local landmarks and history. A print of the Northwestern Pacific Railway Map (9.5 x 20"). Two tickets to the concert of your choice at Old St. Hilary's.

### **HISTORIAN** **\$500**

**Special Benefits:** A book of your choice on local landmarks and history. Two tickets to the concert of your choice at Old St. Hilary's.

### **PATRON** **\$250**

**Special Benefits:** Two tickets to the concert of your choice at Old St. Hilary's.

### **PRESERVATIONIST** **\$100**

**Special Benefits:** A copy of *A Pictorial History of Belvedere 1890-1990*.

### **FRIEND** **\$66**

Celebrating sixty-six years of Landmarks.

**All members are invited to our annual Spring Social and receive our newsletter twice a year. Visit the Landmarks' office to pick up your book or call to reserve tickets to a future concert.**

# Music at Old St. Hilary's *Spring-Summer-Fall 2026*



## **Musae – April 26, 4 p.m.**

The 17-voice treble vocal ensemble brings their fresh spring program “A Gift of Songs: The Living Legacy of Folk Music” to Old St. Hilary’s Landmark.

## **Mads Tolling & John R. Burr – May 17, 4 p.m.**

Two-time Grammy Award-winning violinist Mads Tolling and pianist John R. Burr take the listener on a captivating musical journey filled with rich improvisations and heartfelt interplay.



## **Caroluna – June 14, 4 p.m.**

Lyric soprano Caroluna performs glorious opera arias and art songs by Mozart, Puccini, Bellini, Bizet, Clara and Robert Schumann, Debussy, Messiaen and more.



## **Charlie Torch – August 23, 4 p.m.**

Presenting a compelling blend of musical heritage and fresh talent in the bluegrass tradition. The Charlie Torch band unites two generations of musicians, creating a sound that honors traditional roots while carving its own distinctive path through bluegrass, country, and mountain music.

## **Black Cedar – September 13, 4 p.m.**

Dedicated to music for flute, cello, and guitar, Black Cedar will perform the music of Bach, unique pieces commissioned for the group, as well as folk music from around the world.



## **Duo Violao Brasil – October 4, 4 p.m.**

Duo guitarists Rogério Souza and Edinho Gerber’s reverence for Brazilian guitar, the “violão”, and their desire to explore and expand the musical possibilities of two “violões” together, makes this a performance not to miss.

**To purchase tickets, contact the Landmarks Society at (415) 435-1853, drop by the office at the Boardwalk Shopping Center, or go to [Ticketleap.com](https://www.ticketleap.com).**

## With heartfelt thanks to:

**The Ark**, for providing access to its digital archives including the searchable “morgue” of past issues and for sharing eleven boxes of historic photographs that enrich our understanding of Tiburon’s past.

**Judy Armstrong** and **Alison Pence**, for inspiring our community through their wildflower walks on the Preserve, and for so generously sharing their knowledge and deep love of this treasured open space we are honored to help steward.

**Piper Berger**, for her invaluable help with the upstairs House Museum at the Railroad & Ferry Depot Museum, and for keeping us thoughtfully on course in our care of these important historical resources.

**Peter Brooks** and **Brooks Tree Care**, for exceptional tree work and careful tree pruning at the Art & Garden Center.

**Francis Brooks** and **Dan Engstrom**, for helping dismantle the House Museum at the Railroad & Ferry Depot Museum so painting could move forward.

**Phil Cassou**, for his dedicated service and leadership. Phil’s longtime commitment to our mission and his contributions to the organization have greatly impacted our efforts to preserve and share Tiburon’s historic places.

**Mike Eagan**, for the gift of a Macintosh computer, which facilitates our ability to access and work with The Ark’s digital archives.

**Jeff Hadley** and **Hadley Construction**, for their ongoing generosity and support - from repairing the front doors of Old St. Hilary’s, to site work and continued assistance at the Art & Garden Center.

**Peggy Hodge**, for her extraordinary dedication to the gardens at the Art & Garden Center, including the complete transformation of the front garden along Tiburon Boulevard.

**Maggie McCann**, for helping dismantle the House Museum at the Railroad & Ferry Depot Museum so painting could move forward, all the while working with a “broken wing”.

**Kayla Nelson**, for her donation of a new artificial Christmas tree to replace our well-worn one at the Railroad & Ferry Depot Museum and for transforming our holiday decorations by carefully adding ribbon loops to more than fifty ornaments, giving them a charming vintage look.

**Ivan Silva** and the **Belvedere Tiburon Library**, for their collaborative spirit and generous support in printing Landmarks music programs and event announcements.

**The Tiburon Thrift Shop & Boutique**, for their generous, long-standing support of Landmarks. Their contributions play a vital role in sustaining our annual operating budget.

## IN MEMORIAM

**Jeanne Price** passed away in December 2025. A devoted supporter of local history, she joined the Belvedere-Tiburon Landmarks Society soon after its founding in 1959 and later served seven years on the board. For much of that time, she was board secretary, carefully recording the minutes of each meeting. She was also an active member of the Archives Committee, helping to steward the Society’s historical collections.



Jeanne played a key role in the restoration of the Art & Garden Center as a member of its Site Committee, and her dedication continued there for many years as head docent.

Beyond the Society, Jeanne spent 37 years at *The Ark* newspaper, becoming one of its longest-serving reporters. Her coverage of local issues and community projects earned her several awards. She was also involved in preserving local history through her work with the Belvedere Historic Preservation Committee.

Jeanne’s passion for preserving and sharing the history of her community leaves a lasting legacy. She will be deeply missed.

## Archives Donations October 2025 – March 2026

**The David Allen Family** – Papers relating to Reeds Port Properties, 1954; collection of newspaper articles relating to Belvedere Land Company; photographs from the 1960s and 1970s.

**The Ark Newspaper/Kevin Hessel** – Eleven bankers boxes of Ark photographs; Access to digital search function of the Ark Newspaper 1970s-present.

**Peter Casey** – TPLL Tiburon Pelican’s Juniors team baseball hat, 2026.

**Mark Chiolis** – Photographs taken at Sam’s Anchor Café on New Year’s Eve 12/31/1994.

**Jeff Craemer** – Photographs, postcards and ephemera relating to Tiburon and Belvedere 1900-1960.

**Dave De Tomasi** – Foresters of America certificate from Harvey Anderson, 1932.

**Computer Connections/Mike Eagan** – iMac computer for use in the archives.

**Dan Engstrom** – Photograph of north end of tunnel #2 (Tiburon/Corte Madera) circa 1950s.

**Charles Evans** – Telephone headset used by train order/telegrapher.

**Paul Finnegan** – Tiburon National Bank stock certificates, 1972 and 1973.

**Ben Johnston** – Map of proposed Naval Yard in Richardson Bay, 1918.

**Howard Lazar** – Bust of “Smitty” sculpted by Howard for display at the Railroad and Ferry Depot Museum.

**Chris Morrison** – photographs from Tiburon’s 25<sup>th</sup> Anniversary parade, 1989.

**Warren Newton** – Twenty-six issues of the Ark Newspaper from 1973 and 1974.

**Kenneth Pearson** – Postal cancel (envelope) from the final voyage of the ferryboat “Marin,” 1934.

**Town of Tiburon/Marissa Miller** – Aerial photographs of Tiburon, 1970s-1990s.

**Tiburon Police Department/Laurie Nilsen** – Tiburon Police logo sign, previously on door of old police station.

**Kelley Von Lackum** – Silver tray from the Belvedere Sailing Society, 1965.

**Jeff Zeigler** – Watercolor of Lyford House by William Klopffel, 1959.

# New Members and Landmarks Supporters

We extend our heartfelt thanks to all our members and supporters, both new and returning, for their generous contributions toward preserving our local history.

## January 2025 to present

Anonymous (3)	Piper and Miles Berger	Pamela Dekema and Richard Champe	Scott M. Elrod	Carolyn and Doug Grey	Chuck Hornbrook and Lisa Edwards
The 5 Ryan Foundation	Joan Bergsund	Kathleen Chan	Linda Columbo Emberson	Sallie Griffith	Dale and John Houck
William R. Adams	Marika and Richard Bergsund	Brian Chase	Daren Engel	Judy Wilson and Lawrence Guinness	Maria Zakeri and Mike Hoyle
Wayne Alexander	Rayna and Jim Bernard	Stefanie Cho	Eva and Sven Ericsson	Patricia and Anthony Guzzardo	Daniel Hoyt
Anne and Andy Allen	Shannan and Steve Bishop	Jane and Avery Chope	Bob and Anne Falltrick	Elizabeth and Tim Hachman	Hazel Atangan and Sergio Huerta
Donna Allen	Bailey Sullivan and Kris Black	Jeanette Clary	Ned Farnkopf	Hadley Construction, Inc.	Judy and Bob Huret
John Allen	Shari Cruz and Jared Blumenfeld	Elizabeth and David Clup	Jennifer Fearon	Katia Hage and Rose Mary Santiago	Karen and Richard Hyde
Lynda and James Allen	Boeck & Associates	Julie Coffin	Melissa and Patrick Feder	John Hage	Jo Ellen Hyland
Winifred and Harry B. Allen Foundation	Barbara and Larry Bogel	Barbara Cupper and Richard Colonno	Angelo P. Figone	David Haines	Molly Keil Hynes
Deborah Alstad	Jean Bordon	Belvedere Land Company	Robert O. Finch	Anne and Ken Hammer	Gabriella and Glenn Isaacson
Donna Amon	Deborah Boyd	Dolores B. Conlan	Shirley and Jack Fiorito	Naomi Fulgenico and Andre Hanna	Deborah and William Ivy
Andy Anderson	Kristen Breck	Jane and Al Cooper	Debbie and Rick Fisher	Cynthia Herrera and Joe Hanrahan	Sandy Jacklin
Paige Geimer and Sean Anderson	George Brewster	Tom Coté and Rosalyn Brandt	Patty and Howard Flax	Bridget McInerney Harris	Tina and Jay Jacobsen
Naomi Shankute and Kene Aningo	Symone Williams and Jeremy Brooks	Marina Adrianzen and Peter Cowles	Toby Flax	Gay and Wyman Harris	Henry and Robin Jacobson
Philippa Norman and Rob Arathoon	Kimi and Peter Brooks	Stone D. Coxhead	Douglas Floyd	Muriel M. Harris	Paula and Dennis Jaffe
Anne Marie Siu Yuan and Peter Bacchetti	Louise Felton-Brown and Brian Brown	Jeff Craemer	Erdmuth Folker	Nancy and Scott Harris	Jacqueline and Ian Jaffee
Caroline Bailey and Family	Elliott Brown	Ingrid Woods and Steve Cummings	Mary Fox	Gabriella Sebastiano and Brent Harrison	Barbara Janis
Katharine S. Baker	Faith and Stephen Brown	Tracy and Tim Cunningham	Alice Fredericks	Bonnie Hart	Mary and Thomas Jasek
Nancy Barbour	Peter Bruck	Jeanne and Don Dana	Rose Freedman	Elizabeth and Robert Hart	Ann Jewett
Sharon Barncord	Jo Burnett	John Daniels	Melanie S. Freeman	Nena P. Hart	Jewish Community Federation
Tanja Obear and Mark Bartlett	Anne and Jerry Butler	Amy and Steven Davis	Diane Liu and Mark B. Freiberg	Margie and Bill Hart	Erica Toth and Marcos Jimenez
Lisa and Peter Barto	Caffe Acri, Kathryn Servino	Ken and Ann Davis	Michelle and Robert Friend	Gail Harter	Barbara Johnson
Meagan and Ben Becker	California Rose Catering	Kathleen Burke and Ralph Davis	Georgann Fuller	Joan Harter	Maureen and Ken Johnson
Catherine and James Bedilion	Steve Callender	Nick Davoren and Evelyn Wood	Rena and Spencer Fulweiler	Lois Hartley-Cannady	Rachel Lee and Scott Johnson
Joan and Don Bekins	Peggy C. Campbell	Jane Day	Kelsey Tenney and Benjamin Gadbar	Judy and Bruce Hartung	Walt Johnson
Victoria Belardi	Carol and Dick Canady	Dave De Tomasi	The Julio R. Gallo Foundation	Jennifer and Chris Hartung	Jonathan Kahn
Belvedere Community Foundation	Louise and Angelo Capozzi	Virginia and Phillip DeMaria	Patricia Garcia	Maxwell Hayman	John Kalleen
Carol and Leslie Benet	Pat and John Carapiet	Ann B. Dey	John Garretson	Alan Heath	Joyce Kami
David B. Bennett, CPA	Jennifer Weaver and Derek Carson	Jackie Dickson	Mary Geiger	Elizabeth and John Held	Gee Kampmeyer
Debbie and Shawn Bennett	Diane and Rob Cassil	Joan Don	Annette Gibbs	Ingrid and James Hession	Susan Hoeschler
Susan Benson	April and Phil Cassuy	Grace Severino and Reese Dorger	Joe Gillach and Reynaldo Zertuche	Susan Hoeschler	Kristin and Michael Hogan
Alexis Berger	Marie Cavanagh	Anne and Larry Drew	George H. Gnos	Kristin and Michael Hogan	Charlotte M. Honda
		Elizabeth Duff	Sarina Godin	Holly Nyerges and Jay Hooker	
		Maria Huryn and Ryan Dunbar	Jeri and Fred Goldberg	Joanna Clark and Mark Hoose	
		Agneta and John Dupen	Ira D. Goldfine		
		Mary and David Eklund	Vickie Rath and David Gotz		
			Allison and Taylor Greason		
			Geraldine G. Green		
			Chris Greene		

Maureen Daly and Steve Killpack	Kathlyn M. Masneri and Arno P. Masneri Fund	Joan Palmero Nancy Parker	Romney Resney and David Sandrich	Dina and Bill Tiedje Henry O. Timnick
William and Gretchen Kimball Fund	Don Mathews Matt Mathews	Sally Pasternack Lynn M. Pasternak	Felipe Santiago and Barry Joseph	Robert and Theresa Tomasello Richard Torney
Bruce King David King	Anne and Harry Matthews Judy Mayne	Lynn and Richard Payne Kathy Pearson	DeAnna Schaefer Susan Schneider	Haley Jensen and Nick Trileski Jeanne and Peter Tymstra
Brookie King Robert Kline	Charmaine and Luke Mazur Claire McAuliffe	Vicki and Pete Pedersen Carolie Pescatello	Laura and Timothy Schneider Cristene Schonefeld	Rina and Makoto Uchida University of California
Bill Knick Katie Knick	Maggie Brooks McCann Pam Martori and Bob McCaskill	Paige and Dave Petrini Janice Pinkston	Sally and Steve Schroeder Jayne Sciaroni	Library Acquisitions Jodee and Richard Upjohn
Kimberly and Kevin Knopf Carolyn Kohler	Jeff McColloch Jane McConnell	Elizabeth Pittinger Marden N Plant	Becky and Doug Scott Matthew Scroggy and Sawyer Morton	Georgene and Kirk Usher Katherine and Stephen Van Dusen
Danielle St. Germain and Steve Kulinski	Joe and Anne McCormack Jean O'Korn and Michael McDaniel	Megan Kilduff and Bogdan Demetrius Popa	Vanessa Seidler Stephanie and Mark Selin	Cres Van Keulen Jim Vetter Photography
Ann and Tad Lacey Thomas G. Lacey	Ted McDonnell Joan and Roger McGee	Monica Thiede and David Powell	SF Foundation Nancy Shen	Paul von Stamwitz Anne-Marie and David Walker
George Landau Eleanor Laney	Austen McGregor and Mariah Meza	Dean R. Powell Becky and Bob Pringle	Sally and James Shepard Jennifer and Mike Shepard	Jett Walker Tinman Walker
Cathy Larson Marsha and Michael Lasky	Janice and Steve Meisel Stephanie Mendel	Leah Reyes and Abraham Quecan	Maria and Kip Shuman Jill and Richard Sideman	Gretchen Burmaster and Roger Ward
Teri Lasky Madison Lasky and Tyler Launer	Margarita Vargas and Ryan Mendoza	JoAnn Quinn Rachelle Kaliski Trust	Shirley Silvestri Lindsey Munar and Ivan Sinkevich	Jena and Eric Watson Liz and Jeff Webb
Patricia and Howard Lazar Susan and Michael Lazarus	Susan W. Michaud Christeena Jarvis and Dylan Mikel-Moye	Danielle Racich Lillian Krieger and Aaron Ramirez	Claire and Rob Slaymaker Ann Aylwin and Bill Smith	Elizabeth A. Weisheit Magda Wesslund
Jolie and Blaine Leeds Yamin Xu and Hao Lei	Ashley Casida and Gilbert Milam	Margaret Randall Jon P. Rankin	David Kenneth Smith Suzanne and Harry Smith	Ann and Larry Wheat Ingrid and Bill Wheeler
Mardi Leland Mimi and Walter Levison	Gilbert Milam Harry S. Miller and Diana Chulick	Sally Rankin Allan Rappaport	Suzanne and Harry Smith Savanna Snow	Suzanne and James White Malcolm Whyte
Lorrie Meyercord and Jack Lewis	Harry S. Miller and Diana Chulick	Kappy and Mark Reed Patricia Rees-Miller	Stephen P. Spicer Cathy and Gary Spratling	Julie and Malcolm Whyte Gary Widman
Craig L. Lieber Jean Wang Lin	Bob Mischak Robin Moore	Celia Dimick and Conor Reilly Barbara and Eric Roberts	Lesley Stanford Jordan Lacey and Daniel Stapleton	Christy Wise Fay Wong
Helen and Bill Lindqvist Lovejoy Whistler Family	Susan Morris Thomas Murray	Dexter Roberts Carly Rick and Elliot Rogers	Rachael Steele Amanda Stephens Fund of MCF	Nikki and Jim Wood Woodlands Market
Lisa and Fred Lowell Susan and William Lukens	Leslie Airola-Murveit and Hy Murveit	Ruth and Mel Ronick Paloma Auldridge and Miguel Rosales	Paul and Elle Stephens Family Fund	Dellie and Doug Woodring Mia Wyman
Lyford Cove Old Tiburon Neighborhood Association	Suzanne Fong and Frank Nappi Christina Newkirk	Paloma Auldridge and Miguel Rosales	Donna J. Stewart Stinson Family Band	Katherine Ye Joyce Lee and Jaemin Youm
Diane Lynch A'Laina and Patrick Lyons	William W. Newland Diane and Jeff Newman	Robert F. Rosenbluth Camerin Ross	Tara Sullivan Patricia Montag and John Swain	Patty and Dave Young Betsy and Coleman Youngdahl
Kathryn MacDonald Photography	Warren Newton Kelly Nichols	Sylvia Ross Rotary Club of Tiburon (Sunset)	John Swain Thelma S. Taich	Ronald Zech Jeffrey Zeigler
John and Francesca Madden Jan Maisel	Arlene and Chip Nielsen Kathy Niggeman	Marcia and Michael Rubenstein Susan Cluff and Neil Rudolph	Christine and John Telischak Lydia Kim and Tuan Thai	Zelinsky Properties LLC Laleh Zelinsky
Marin Community Foundation Marin Event Lighting	Jennie Noerr Hilda Nogueiro	Rebekah and Luis Ruiz Ai Kobayashi and Stuart Russell	Gerl Thayer Tess Segal and Alan Thompson	Omar Zermeno and Anna Wolfe William Zuendt
Marin GreenPlay Camp Jared Martin and Adolfo Moreno	Marcelino and Shirlee Nogueiro Jim and Moira O'Neal Terry D. O'Neill	Sarah and Stuart Ryan Sara and Dennis Sakai Caroline R. Sanders	Rod Thompson Michelle and Dave Thomsen Tiburon Thrift Shop	
Joyce Martin	Ron Okulski Keiko Otsu			

Belvedere-Tiburon Landmarks Society  
1550 Tiburon Blvd., Suite M  
Belvedere-Tiburon, California 94920  
415-435-1853

NONPROFIT  
ORGANIZATION  
U.S. POSTAGE PAID  
SAN RAFAEL, CA  
PERMIT NO. 87

[www.landmarksociety.com](http://www.landmarksociety.com)  
[instagram.com/belvederetiburonlandmarks](https://www.instagram.com/belvederetiburonlandmarks)  
[facebook.com/belvederetiburonlandmarksociety](https://www.facebook.com/belvederetiburonlandmarksociety)

A 1956 view of the small circular park between the San Francisco Yacht Club and 83 Beach Road, donated to the City of Belvedere by the Belvedere Land Company prior to 1960.



**RAILROAD & FERRY MUSEUM**  
1920 Paradise Drive



**CHINA CABIN**  
52 Beach Road



**OLD ST. HILARY'S**  
201 Esperanza Street



**ART & GARDEN CENTER**  
841 Tiburon Boulevard



**HISTORY COLLECTIONS**  
1550 Tiburon Boulevard